



## Charisma® Opal Flow

The comfort flow for all applications.

Safety and strength combined.

Charisma Opal Flow is the ideal completion of the Charisma brand. Because of its very good controllable viscosity the minimal invasive tasks will be even more uncomplicated. Charisma Opal Flow stands for diagnosis-safe radiopacity and easy handling. With this addition to either Charisma Diamond or Charisma Topaz you get everything you need for durable and safe restorations.

Giving a hand to oral health.

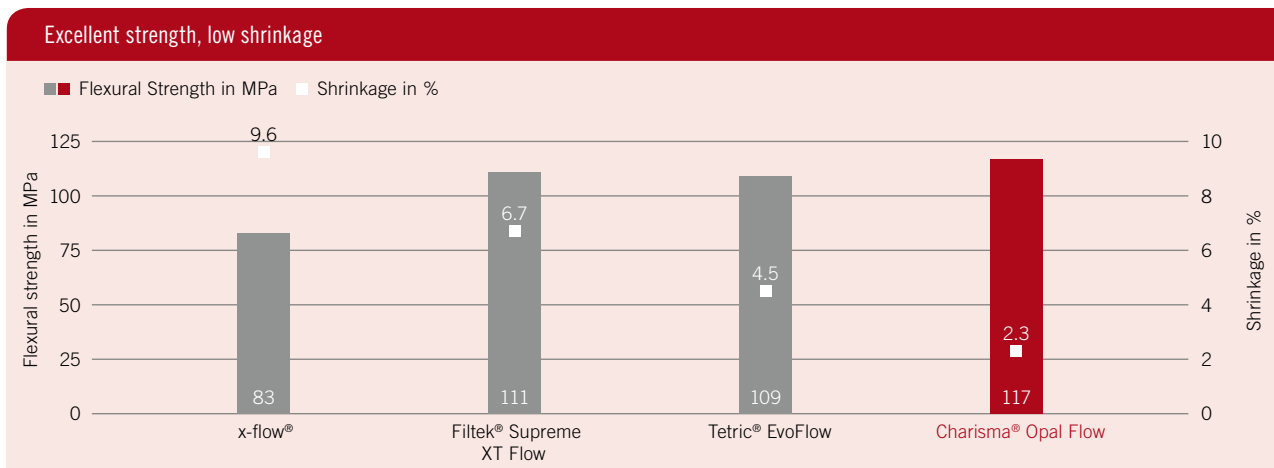
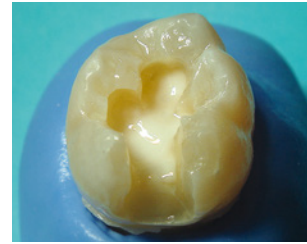


**KULZER**  
MITSUI CHEMICALS GROUP

# Charisma® Opal Flow

Your assets at a glance.

- Excellent handling properties:** Charisma Opal Flow creates a uniform, smooth surface in areas of the cavity that are difficult to access. This is the perfect preparation for the higher viscosity composite such as Charisma Diamond or Charisma Topaz. The flowable composite retains its shape and position following application. It is applied in a non-dripping syringe and thus flows only when pressure is applied with an instrument due to its thixotropic characteristics. That makes it the first choice for many indications.
- Safe diagnosis:** The composite filling is easily distinguished from the residual tooth structure due to its excellent radiopaque properties. Charisma Opal Flow ensures an optimal, reliable diagnosis.
- Naturally perfect, durable restorations:** With Charisma Opal Flow you benefit from the highest values in comparison tests. It shows low shrinkage and high flexural strength for naturally perfect, durable restorations. The compact shade system with its 7 colours can be combined with all commercially available acrylate-based composites.



Source: Kulzer F&E, Wehrheim, Germany. Unpublished data. Documentation available.

## Product range.

Shade		Art. code
		Syringe 1 x 1.8 g
Universal shades	A1	66040900
	A2	66040951
	A3	66040952
	A4	66040953
	B2	66040954
Opaque shades	OM (Opaque Medium)	66040955
	Baseliner	66040956

Kit		Art. code
		Syringe 4 x 1.8 g
Charisma Opal Flow Assortment	A1, A2, A3, Baseliner, Accessories	66043422



x-flow® is a trademark of Dentsply De Tray GmbH · Filtek® is a trademark of 3M Company · Tetric® EvoFlow is a trademark of Ivoclar Vivadent AG